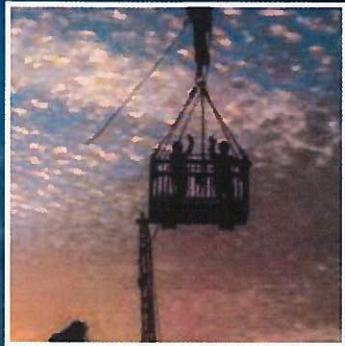


# Burullus Combined Cycle Power Plant Project

SIEMENS



ORASCOM  
CONSTRUCTION

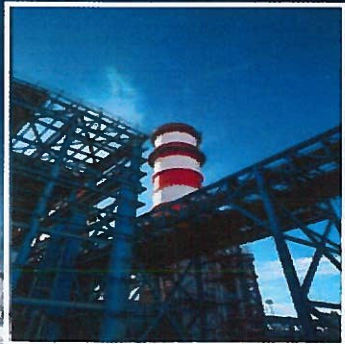


Burullus Power Plant is one of the largest combined cycle power plants in the world. It is built over 1.05 Million m2. It accommodates 8 state-of-the-art H-class gas turbines and 4 steam turbines of a total capacity of 4,800 MW.

 Man-hours without Lost Time Injury  
**10,000,000**

 Workforce  
**8,000**

As of 23rd January 2017

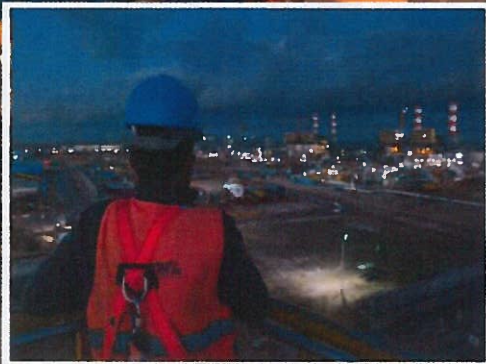


# Burullus Combined Cycle Power Plant Project

SIEMENS



ORASCOM  
CONSTRUCTION



**XERVON®**

**ENPC**  
Egyptian Nitrogen Products Company



**The Egyptian Nitrogen Products Company**

**APPRECIATES**



**For the Efforts To Achieve  
5 million working hours  
without LTI**

**Wishing you more success**